

# SAN REMO SHORES COMMUNITY REFERENCE GUIDE

*For Homeowners, Renters, and Guests*

## ABOUT THIS GUIDE

*Published by San Remo Shores Association*

The purpose of this guide is to provide our homeowners, renters, and guests with a quick reference to information that will make their time in San Remo Shores enjoyable, informed, and courteous. Our community is welcoming, safe, and supportive when there is mutual respect for people, property, and the environment. The Association has put together this guide to help both long-term residents and newcomers to ensure San Remo Shores remains a place we all can enjoy together.

## ABOUT SAN REMO SHORES

San Remo Shores is a residential waterfront community located in Bradenton, Florida. The neighborhood is mostly made up of permanent residents and snowbirds along with long-term and short-term rentals. This subdivision was established in the 1960's and is part of Bradenton located in Manatee County.

### LINKS AND SOCIAL MEDIA

[association@sanremoshores.org](mailto:association@sanremoshores.org)

[www.sanremoshores.org](http://www.sanremoshores.org)

[www.facebook.com/groups/sanremoshores/](https://www.facebook.com/groups/sanremoshores/)



WHAT YOU'LL FIND INSIDE:

- **NEWCOMER INFO**
- **SAFETY INFORMATION**
- **LOCAL RESOURCES**
- **RULES & LAWS**
- **COMMON COURTESIES**
- **THINGS TO DO NEARBY**
- **SOCIAL MEDIA INFO**
- **HOA CONTACTS**



## OUR COMMUNITY

Whether you live here year-round, or you're just visiting for a short time, when you're in San Remo Shores you are our neighbor. We welcome you and hope that you will treat our community the same respect you receive.

√ See something? Say something! If something seems "off" it probably is. Don't sit back and let things happen, say something! Our community must watch out for one another and have a voice to thwart ill-intended individuals.

√ Talk to a neighbor and let them know of a concern before calling code enforcement, animal control, or other agencies. The gesture goes a long way and builds our community up!

√ Homeowners are encouraged to contribute to the homeowner's association each and every year, and volunteer if so able. Get involved!

√ Be friendly and neighborly at all times, putting aside political, religious, or other differences.

√ Keep a clean and orderly yard consisting of manicured bushes, trimmed trees, cut grass, pulled weeds, and no litter.

√ Take in trash and recycle bins after pickup on the same day as they are picked up.

*Thank you for being a great neighbor!*



### SHERIFF, FIRE, & RESCUE

Dial **911** to request emergency services. Make sure you know the address of where you are staying! Non-emergency? Dial (941) 747-3011 ext. 2260



### SLOW DOWN

Slow down when cruising the streets of San Remo Shores and keep our streets safe for walkers, runners, bikers, elderly, and children.



### RULES OF THE ROAD

Enjoy the community streets, but be safe! Walk/run facing traffic, and bike with the flow of traffic. Dress appropriately so drivers can see you in low light conditions!



### NO WAKE

Keep your speed to a minimum throughout the canal system and out to the marked area. This means completely off plane and traveling near idle speed.



### PICK UP AFTER PETS

Do your part and pickup after your pets! The Manatee ordinance requires pet owners to remove pet waste deposited by their animal from any public or private property.



### QUIET NOISY PETS

We live in a peaceful place and we love our animals, however there are ordinances in place to limit persistent barking, whining, howling, etc lasting longer than ten minutes. If you have a noisy pet, keep them indoors and respect tranquility of our neighborhood.



### PEACEFUL HOURS

Keep the volume down, especially during the county ordinance low volume hours between 10PM - 7AM. For example: voices, music, power equipment, animals, etc.

## BOATING & FISHING

A few important notes about fishing and boating in Florida, and in particular this area:

✓ Fishing licenses are required for all individuals 16 years of age and older who cast a line (unless fishing with a USCG licensed charter captain or in an exempt class). Seniors 65 years or older, Florida residents who are members of the military, and Florida residents certified as totally or permanently disabled are exempt.

✓ Purchase a fishing license before you head out at ([www.GoOutdoorsFlorida.com](http://www.GoOutdoorsFlorida.com)), on the App (Fish | Hunt FL) or at a retailer such as Walmart or Dick's Sporting Goods.

✓ Make sure you fully understand and are equipped with the required safety equipment before heading out on the water. Current regulations are available online at [www.myfwc.com/boating/regulations](http://www.myfwc.com/boating/regulations).

✓ Florida enforces strict limits on keeping fish by species, size, and quantity. Know the regulations before you put that fresh catch on ice! Tip: Install the Fish Rules app for your smart phone, or learn about regulations online at [www.takemefishing.org](http://www.takemefishing.org).

✓ If fishing from the canal docks/seawalls, do **NOT** leave cast rods *unattended* and make sure you reel in the line when boats are navigating the canal. Fishing line can do damage to boat motors & cause safety concerns.

✓ Boating licenses **do** exist in Florida. Florida requires any one born after January 1, 1988 to have a Boating Safety Education ID Card to operate a motorized vessel of 10 horsepower or greater.

✓ Beachgoers need to know that most Anna Maria Island beaches do **NOT** allow glass, alcohol, pets (except service animals), bicycles, fires, grills, golf carts, vehicles, fireworks, or fishing (in swimming areas).



### GARBAGE & RECYCLING

#### Trash = Monday

Garbage must be placed in an official county-issued "big bin"

#### Recycling = Monday

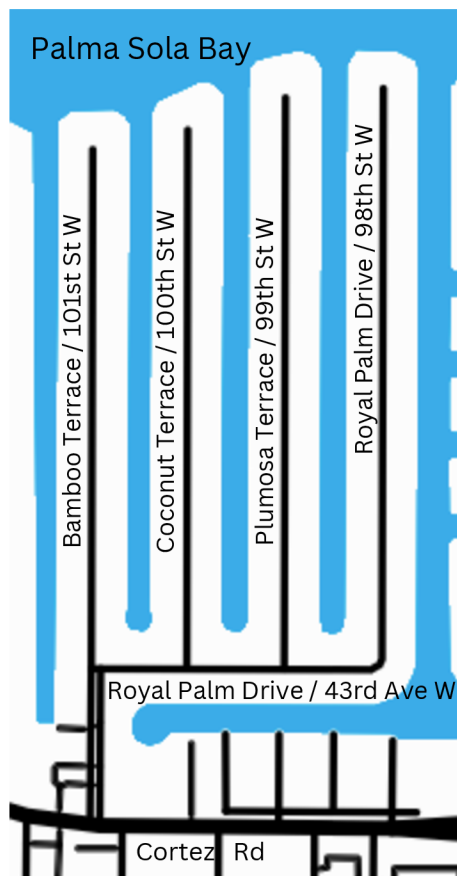
Place **blue** recycling container at curb (non-recycled items pictured on lid). **NO PLASTIC BAGS!**

#### Yard Waste = Monday

Must be in sturdy garbage bags, put into garbage cans or bundled no longer than 4 feet in length.



### STREET NAMES



## WILD LIFE RESCUE



To report an injured, sick, or dead marine mammal or sea turtle, call (888) 345-2335.

To report an injured, sick, or dead bird, call [Wild Bird Rescue \(941\) 388-3010](tel:9413883010).

Please do **NOT** feed the wild life or physically interact with manatees, dolphins, or any other native species. It's illegal and strictly enforced.

## WILD LIFE SAFETY



Summer is [Stingray season](#), which means it's time to do the "stingray shuffle" whereby it is recommend that you shuffle your feet flat on bottom when entering water to avoid stepping on the top of a ray. The barbs in their whip-like tails are painful if an unsuspecting beachgoer kicks or steps on one.



[Sea Turtle nesting season](#) is May 1 to Nov 1. Any sand sculptures or holes created on the beach must be filled in and leveled before leaving the beach. Also, do **NOT** leave any chairs or structures on beach after sunset, and keep your flashlights off.

## HURRICANE PREP

In Florida, we consider [hurricane season](#) to be between June 1 - November 30. When hurricanes are predicted in our area, evacuation planning is essential. Have a plan before the storms come!



San Remo Shores is a [Flood Zone A](#) and may be subject to mandatory evaluations. Learn more at [www.floridadisaster.org/planprepare](http://www.floridadisaster.org/planprepare)



### HOSPITALS

**Blake Medical Center**  
*A Level II Trauma Center*  
2020 59th Street West  
Bradenton, FL 34209  
(941) 792-6611

**Manatee Memorial Hospital**  
206 2nd Street East  
Bradenton, FL 34208  
(941) 746-5111



### POST OFFICE

**Cortez USPS**  
12112 44th Street West  
Cortez, FL 34215  
Open Monday thru Friday  
10:00 AM - 1:00 PM & 2:00 - 4:00 PM  
Closed Saturday & Sunday



### LIBRARIES

**South Manatee Library**  
6081 26th Street West  
Bradenton, FL 34207  
(941) 755-3892

**Downtown Central Library**  
1301 Barcarrota Boulevard West  
Bradenton, FL 34205  
(941) 748-5555

**Island Library**  
5701 Marina Drive  
Holmes Beach, FL 34217  
(941) 778-6341



### PRESERVES & PARKS

There are many parks and preserves set aside for enjoyment in our area. Most of these parks are open from sunrise to sunset. Gates may be closed during non-operating hours.

More online at [www.mymanatee.org](http://www.mymanatee.org)

# NAVIGATING PALMA SOLA BAY

Summer is Stingray season, which means it's time to do the stingray shuffle whereby it is recommend that you shuffle your feet flat on bottom when entering water to avoid stepping on the top of a ray. The barbs in their whip-like tails are painful if an unsuspecting beachgoer kicks or steps on one.

Sea Turtle nesting season is May 1 to Nov 1. Any sand sculptures or holes created on the beach must be filled in and leveled before leaving the beach. Also, do NOT leave any chairs or structures on beach after sunset, and keep your flashlights off.



## KNOW THE TIDES

Tidal changes in this area throughout most of the year have a 3' swing. Extremely low tides can be treacherous for inexperienced boaters. Always [know the tides](#) and stay in the marked channels to avoid trouble!



## STAY IN THE CHANNELS

As you can see in the image provided, there are three main channels in the bay. These channels provide for safe routes in deep water. Leaving these channels may place your boat in jeopardy of hitting bottom or worse as there are some large oyster beds.



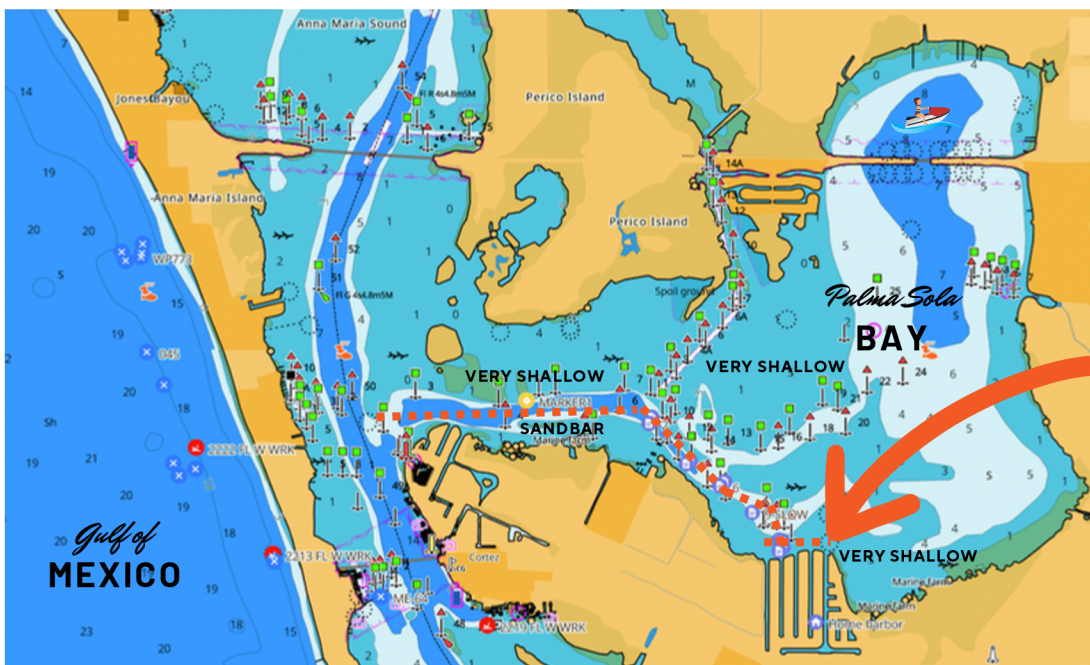
## SLOW FOR MANATEES

Our area is home for the endangered gentle giant, the [Manatee](#). These large mammals are present year-round and are extremely slow moving. Keep your eyes open and speeds slow in Manatee Zones always!



## HAVE FUN!

Palma Sola Bay is a mecca for watersport fun. You'll see boats, jet skis, kayaks, paddle boards and other crafts throughout the bay. It's a great place to have fun on the water and enjoy the warm Florida waters. The best spot for these activities is on the east side where the deeper waters are found.



# EMERGENCY INFO SHEET

Address

---

City/State/Zip Bradenton, Florida 34210

---

Phone (       )       -

---

Notes

---

---

---

---

---

We recommend you will this out and keep a copy easily accessible for those guests visiting your house and may not know the address or phone off the top of their head. This is helpful in an emergency.

## PUBLICATION CONTACT INFORMATION

**San Remo Shores Association**

**7466 Cortez Rd W, Box 224**

**Bradenton, FL 34210**

**association@sanremoshores.org**

**www.SanRemoShores.org**